



## In This Issue:

**BERARD**  
SINCE 1945

The Mega Transport Experts

- ▶ The Shipyard | Loading Out Amelia Island
- ▶ Power Up! | Transformer Transport & Install Project
- ▶ Happy New Year From Berard!

# The Shipyard Loading Out Amelia Island



## Job Specs

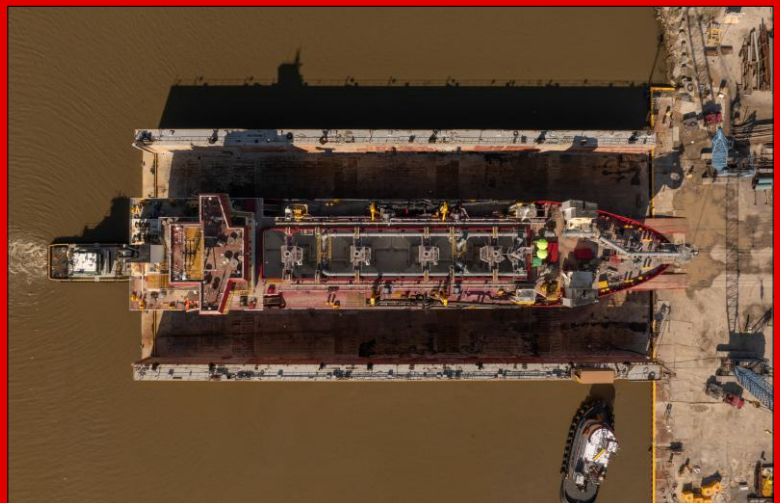
**Weight:**  
4,350 Tons

**Dimensions:**  
336'L x 68'W

**Equipment Used:** 134 axle lines of SPMTs, 6 power packs, 2 deck spacers, barge ramps, steel plate and winch trucks

The Berard team recently transported and loaded out a 4,350 ton dredge barge named Amelia Island for a major South Louisiana shipyard. The team began by lifting the colossal sized vessel from its supports and moving it through the shipyard to a waiting dry dock. The 134 axle lines of SPMTs situated in a 3 file configuration were instrumental in maneuvering the vessel between other builds on site while on its way to the load out area. The Berard team and the client's dry dock team worked together flawlessly to make the load out a safe and successful one.





# Power Up! Transformer Transport & Install Project



## Job Specs

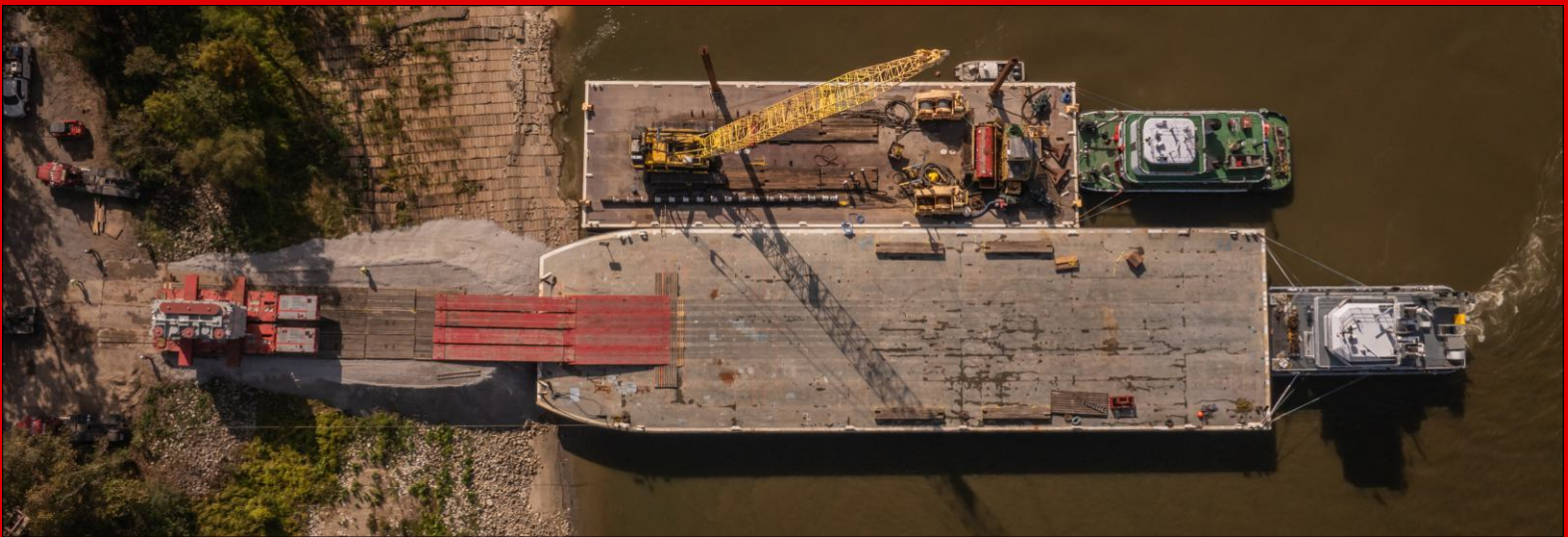
**Weight:**  
705,500 lbs.

**Dimensions:**  
27'-7" L x 11'-5" W x 23'-7" H

**Equipment Used:**  
16 axle lines of Goldhofer PST-SLE transporters, barge ramps, winch trucks and jacking equipment

In early 2024, Berard undertook the complex task of delivering an electrical transformer weighing over 350 tons to a nuclear power facility near Baton Rouge, LA. When the receiver was not ready to accept the transformer upon its arrival at the Port of New Orleans, Berard transferred the cargo onto a deck barge and transported it to a storage facility in Morgan City, LA, where it was securely stored. Later in the year, the transformer was reloaded onto a deck barge via roll-on for final delivery. With Mississippi River levels at historic lows, Berard engineered an aggregate base offload ramp to facilitate a roll-off operation. Despite the roll-off ramp having a 15-degree slope, 16 axle lines of Goldhofer PST-SLE transporters assisted by a Berard winch truck with an anchor blade had no issue in traversing the grade to the top of the riverbank. The transporters then carried the transformer along a 2.5-mile route to its destination. There, Berard crews used hydraulic climbing jacks to lower the transformer onto a custom grillage provided by Berard for final storage.







WISHING ALL OF YOU

# Happy New Year!

FROM ALL OF US AT BERARD

The Berard team had a blessed and prosperous 2024. As we go into 2025, we reflect on our past successes and we look forward to carrying on the same dedication to quality service that made us the company we are today. We wish all of you and your families a Healthy, Prosperous and Happy New Year!

## > Birthdays @ Berard

*Happy  
Birthday!*

### Happy Birthday to These Dedicated Team Members!

Jenny Berard  
Morgan Berard  
Quincy Broussard

Hunter Freyou  
Wilson "Bam" Lewis  
Avery Munson

Justin Thibodeaux