



In This Issue:

- > Energy Sector Moves | BOP-LMRP Transport Project
- > Load Out! | Cold Box Load Out Project
- > Berard On TV! | Berard Featured on Smithsonian Channel

BERARD
SINCE
1945

The Mega Transport Experts

Energy Sector Moves BOP | LMRP Transport Project



Job Specs

Weight:

205 & 243 Tons

Dimensions:

20'L x 18'W x 40'H

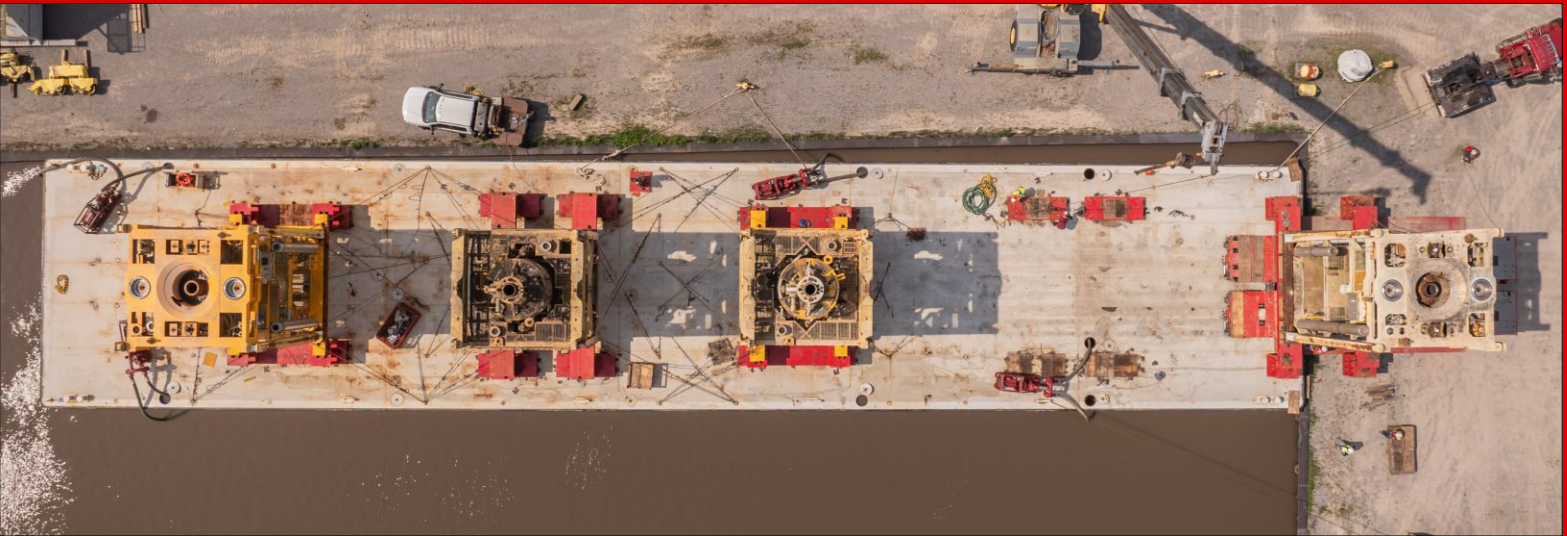
20'L x 18'W x 35'H

Equipment Used:

16 axle lines of SPMTs, 2 power packs, Berard 219' x 43' deck barge, loading ramps, high volume water pumps, stands and winch trucks

Team Berard recently had the privilege of handling a turn key BOP project for another valued client. The team loaded one of the stacks in Channelview, TX, and marine transported it to Pascagoula, MS. After arrival, the team offloaded the cargo and received two more stacks. The stacks were transported on Berard's custom 219'L x 43'W deck barge which was specifically designed for BOP-LMRP specific projects. The cargo was offloaded at the Port of Iberia. Berard SPMT operators and team members transported the stacks into the client's shop and jacked down the stacks over 6 feet to the shop slab. Team Berard handled everything flawlessly and more importantly, safe.





Load Out! Cold Box Load Out Project



Job Specs

Weight: 256,500 lbs.

Dimensions:

18'W x 78'L x 21'H

Equipment Used: 14 axle lines of SPMTs, 1 power pack, Berard 219' x 43' deck barge, loading ramps, high volume water pumps, stands and winch trucks

Cold Box moves are common for the Berard team, our crew is well versed with the particular requirements for this cargo. With critical internal components proper handling is critical to the transport process. The Berard team recently transported this 78' long by 18' wide cold box from a South Louisiana fabricator to export port terminal for a valued client. First, the box was lifted and transported using a 14-axle line Goldhofer PST-SLE self-propelled transporter through a congested fabrication facility. The same transporter was then used to roll the cold box onto Berard's BTI 1945 deck barge, measuring 219' x 43'. Once lashed on the barge, the cargo safely transited the Gulf Intracoastal Waterway to meet an ocean vessel for export.





On TV! Berard Featured on Smithsonian Channel



The team was featured on the Smithsonian Channel's hit series, "How Did They Fix That?". The episode highlights the Berard team transporting a massive container crane at the Port of Savannah, Georgia.

See the episode by clicking the button below:

[VIEW VIDEO](#)



> Birthdays @ Berard

Happy Birthday!

Happy Birthday to These Dedicated Team Members!

Steve Barras
Andrew Berard
Ayden Berard
Cheryll Berard
Holly Bohle

Clay Bonnet
Alex Conrad
George Doucet
Luke Dowling
Mylie Freyou

My'Kajon Maze
Anthony Roth
Cameron Trahan
Tim Wilson