

OnTheMove

The Monthly Newsletter from the Berard Team

June
2024



In This Issue:

BERARD
SINCE
1945

The Mega Transport Experts

- Load Out! | Deck Load Out
- By Land & Sea | The Boiler Module Project
- Team Member Spotlight | Danny Pontiff

Load Out! Deck Load Out



Job Specs

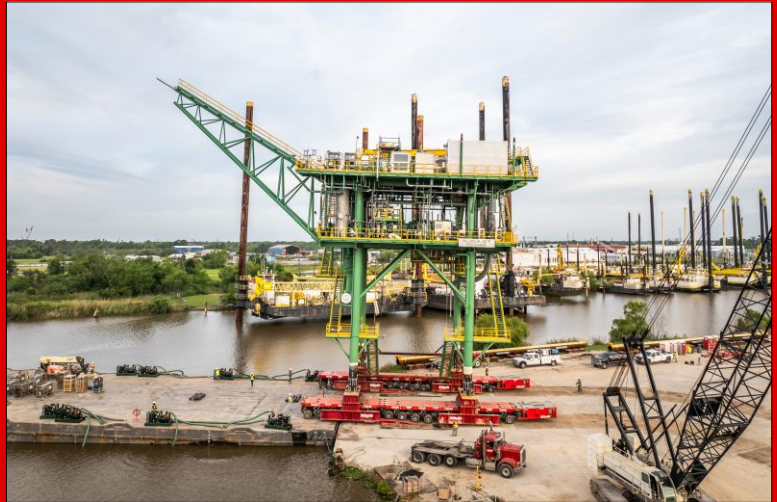
Weight: 660 Tons

Dimensions:
77'L x 71'W

Equipment Used:
32 axle lines of SPMTs,
2 power packs, barge
ramps, deck barge,
steel plate and winch
trucks

It's great to see another oil & gas industry load out these days to which the Berard team has performed a number of in recent months. The team loaded out this four pile, 660 ton offshore topside deck for a South Louisiana fabricator. Berard SPMT operators lifted the deck from it's temporary supports and began the trip to the bulkhead for load out. The team used several sheets of steel plate along the travel path to ensure the heavy cargo would have proper ground support as it traveled through the yard. As soon as the deck arrived at the bulkhead, ballasting operations commenced and the deck was slowly rolled onto the barge ramps and onto the deck barge into final position. Our team performed great and made this another success for the team and helped the fabricator stay on schedule, a win for everyone.





By Land & Sea The Boiler Module Project



Job Specs

Weight:

141,000, 299,016 and 406,008 lbs.

Dimensions:

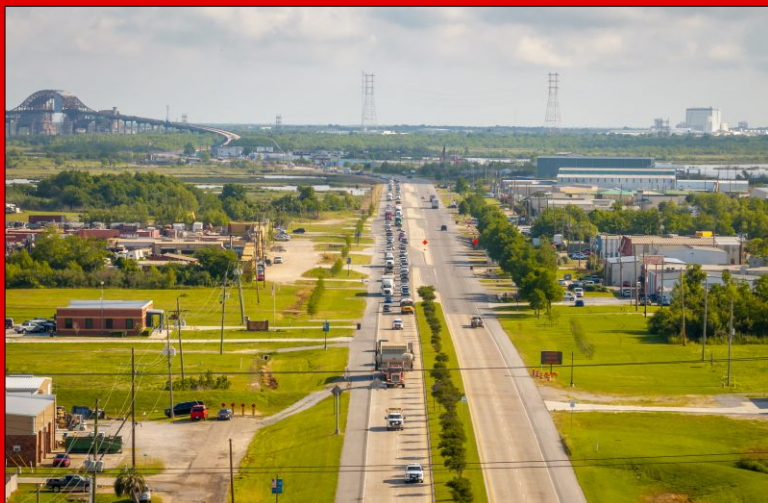
35'-3"L x 9'-9"W x 20'-5"H up to
36'-5"L x 20'-1"W x 16'-5"H

Equipment Used:

14 axle lines of Faymonville DualMAX platform trailer, 13 axle TrailKing lowboy, 12 axle line Goldhofer THP/SL trailer, prime movers, Berard 219' x 43' barge, high volume water pumps and barge ramps

The Berard team received the call to transport three boiler sections from Abilene, Texas to a New Orleans, Louisiana area refinery. With the gross weight of the heaviest load nearing 800,000 pounds, the geographic location of the refinery limited delivery via truck; the boiler fabrication site was nearly 500 miles to the nearest navigable waterway. Berard transport engineers developed a plan delivering the three boiler sections to a barge dock in Houston, TX using 14 axle lines of Faymonville DualMAX platform trailer and a Trail King 13 axle lowboy. Once at the barge dock, a 12-axle line Goldhofer PST-SLE transporter loaded the three components onto the Berard owned BTI 1945 deck barge. Berard provided a bathymetric survey of the shallow channel leading to the roll-off dock, ensuring an efficient towing and roll-off operation. The final 4-mile journey to the refinery was completed on schedule using a 12-axle line Goldhofer THP/SL trailer.





> Team Member Spotlight

Danny Pontiff

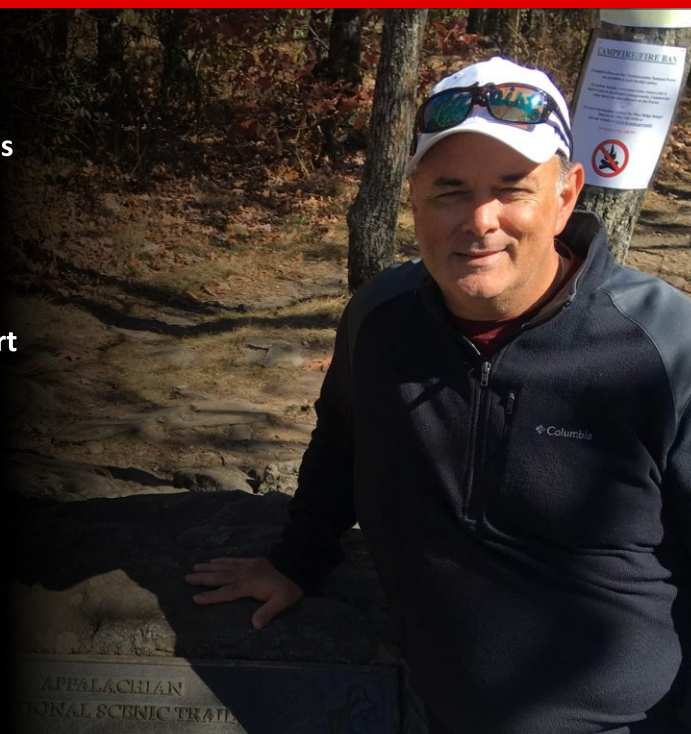
Chief Financial Officer



Danny Pontiff joined the Berard team in 2022 and serves as Chief Financial Officer. He brings decades of accounting knowledge and experience to the team.

“Being the CFO at Berard, I enjoy the ability to bring my work experience to provide guidance and support to the entire Berard family and all of the employees. The best part of my job is the opportunity to constantly learn and grow. I'm exposed to new challenges regularly, which helps me develop both professionally and personally.” says Danny.

Danny has been married for 36 years to Tiffany. They have two daughters and four grandchildren. His hobbies include traveling, hiking, reading, hunting, fishing and wood working.



> Birthdays @ Berard

Happy Birthday!

Happy Birthday to These Dedicated Team Members!

George Broussard
Roy Courville
† Rogers Courville

Anthony Tauzin
Clarence Romero
Connor Angelle