

OnTheMove

The Monthly Newsletter from the Berard Team

October
2024



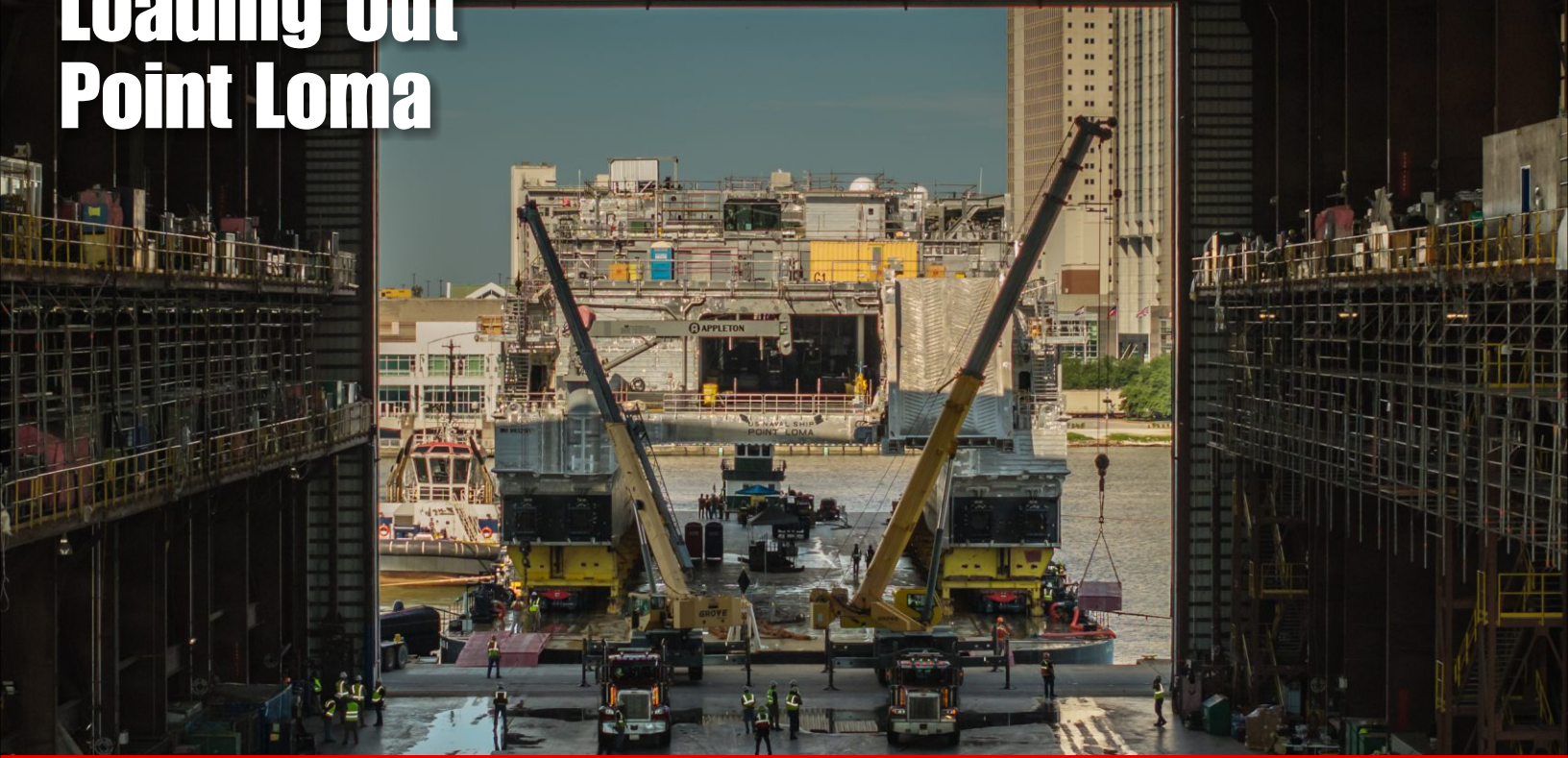
In This Issue:

- > The Shipyard | Loading Out Point Loma
- > Load Out! | Coldbox Transport & Load Outs
- > It's Showtime! | Berard @ Breakbulk 2024

BERARD
SINCE 1945

The Mega Transport Experts

The Shipyard Loading Out Point Loma



Job Specs

Weight: 2,200 Tons

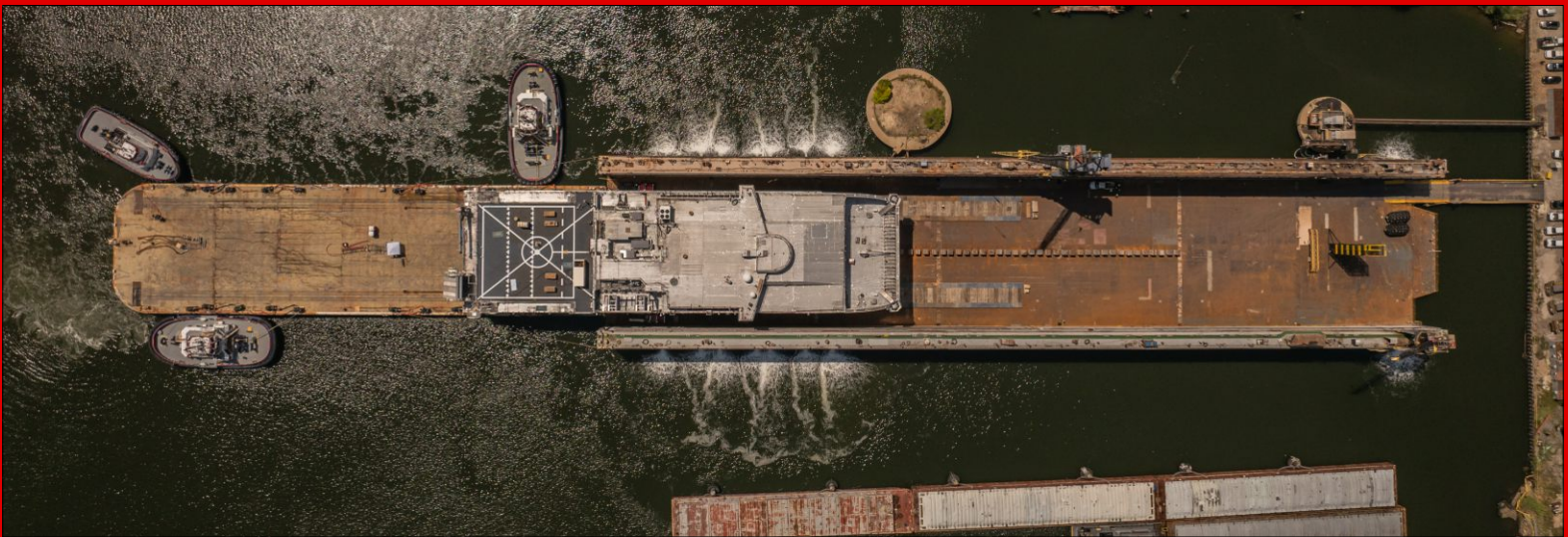
Dimensions:

338'L x 94'W x 105'H

Equipment Used: 112 axle lines of SPMTs, 4 power packs, loading ramps, high volume water pumps and winches for barge securement

The Berard team had the honor of launching another great US Navy ship. The team loaded out EPF 15, the USNS Point Loma, a 2,200-ton Expeditionary Fast Transport ship (EPF). The team transported the 338' long EPF from the client's final assembly bay to a deck barge. Once secured on the barge, it traveled down river to be trans-loaded. Once at the transfer point, the trans-loading of the vessel onto the floating dry dock began. The trans-load went smoothly, thanks to all involved. With the team's dedication and hard work, the job was completed safely and successfully in only one day.





Load Out! Coldbox Transport & Load Outs



Job Specs

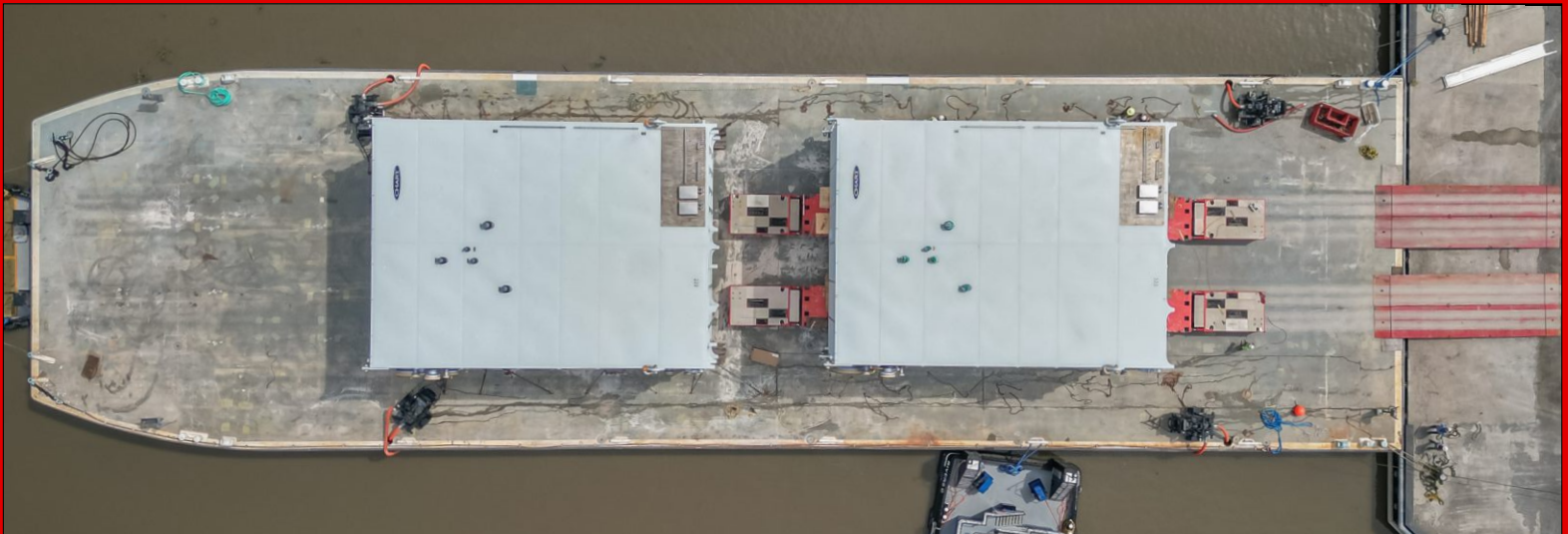
Weight:
959,300 lbs.

Dimensions:
60'-2"L x 46' 8"W x 35'H

Equipment Used:
32 axle lines of Scheuerle SPMTs, certified load cells, 260' x 72' deck barge with 2 tugboats, barge ramps, ballast pumps, grillage, and mooring equipment

The Berard team recently completed the challenge of shipping two cold boxes from two different origins in Louisiana to an ocean vessel in Houston, Texas for export. The first box to be loaded was constructed at a fabrication facility in Lake Charles, LA. Berard transport engineers developed a plan that would satisfy Louisiana DOTD transport requirements for travel across a public highway, then load onto a 260' x 72' deck barge. After providing a certified weight of the nearly one-million-pound package, Berard crews utilized 32 axle lines of Scheuerle SPMTs to lift, transport, and roll-on the first cold box to the barge. Twenty-four hours later, the barge arrived at the second loading facility in New Iberia, LA. Berard again used Scheuerle SPMTs to load the cold box onto the barge in one day. The barge then travelled via inland waterways to the Port of Houston, TX, where the cargo was safely transferred to an ocean vessel for export.





It's Showtime! Berard @ Breakbulk 2024

STAND
J07

Visit The Berard Team At

BREAKBULK
AMERICAS OCT 15-17 2024

George R. Brown Convention Center - Houston

The Berard team will be exhibiting at Breakbulk Americas 2024 on October 15-17. The annual event is held at the George R. Brown Convention Center in Houston, Texas and brings vendors and clients together from around the globe. Our team will be on hand to welcome visitors at stand J07. We're ready to visit with our existing clients as well as introducing our great company to new ones. Stop by and see the team!

> Birthdays @ Berard

*Happy
Birthday!*

Happy Birthday to These Dedicated Team Members!

Easton Berard
Randy Berard
Jacob Boudreaux
Kevin Bouton

Darryl Doucet
Jamie Houghton
Tina Lasseigne
Crystal Touchet